



6300 N WICKHAM ROAD, MELBOURNE, FL 32940
SUNTREE HEALTHPLEX

PROPERTY HIGHLIGHTS

Available Space: 5,539 SF

- Retail/Office Space with Great Visibility in Busy & Popular Center
- In the Heart of Suntree
- Great Synergy with Health Related Tenants
- Easy Access with Multiple Entrances & Plenty of Parking

DEMOGRAPHICS

	1 MILE	3 MILE	5 MILE
Population	4,312	35,434	91,681
Households	2,041	14,841	39,934
Median HH Income	\$83,448	\$88,618	\$83,638

FOR MORE INFORMATION

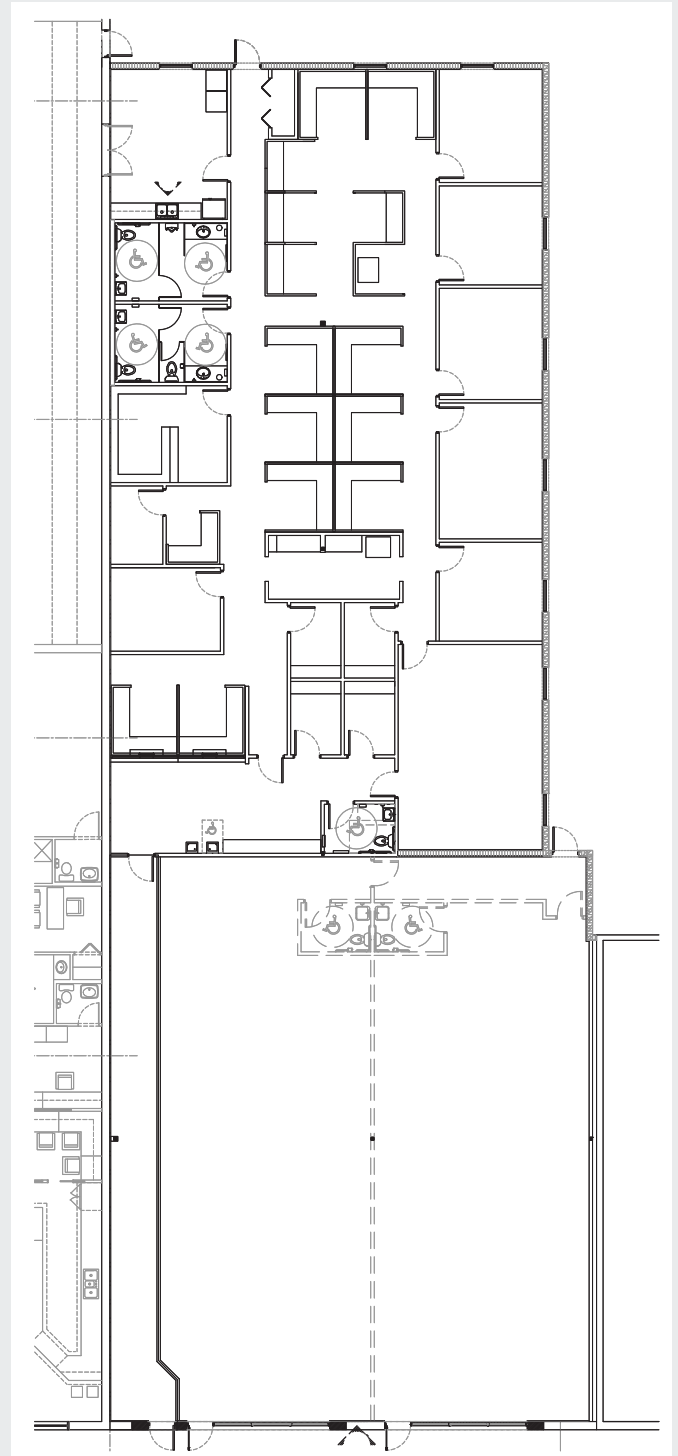
Joe Poirier
 321-537-7996
 Joe@v3capital.com



FOR LEASE
Contact Broker for Pricing

6300 N WICKHAM ROAD, MELBOURNE, FL 32940
SUNTREE HEALTHPLEX

Joe Poirier
321-537-7996
Joe@v3capital.com



The information contained herein has been given to us by the owner of the property or other sources we deem reliable. We have no reason to doubt its accuracy, but we do not guarantee it. All information should be verified prior to leasing.



496 S. Hunt Club Blvd.
Apopka, FL 32703
407-848-1663
V3Capital.com