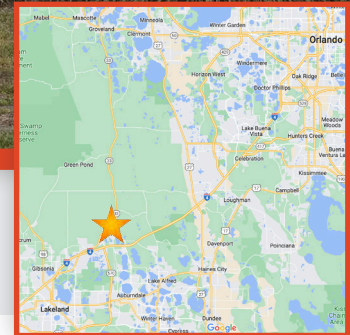




120 CARTER BLVD., POLK CITY, FL 33868

POLK CITY CENTER



PROPERTY HIGHLIGHTS

- Retail/office space available in neighborhood center
- Emerging residential market with new construction
- Serves major employment centers along I-4 industrial corridor
- Easy access and visibility
- Join local in-person service tenants

DEMOGRAPHICS

	1 MILE	3 MILES	5 MILES
Population	1,148	15,827	98,662
Households	439	5,808	36,532
Avg. HH Income	\$55,382	\$59,390	\$56,422

For More Information:

Solomon Attaway
 407-516-4562
 solomon@v3capital.com

Caden Florence
 407-307-4477
 caden@v3capital.com



FOR LEASE
REDUCED RATE
\$14 PSF

120 CARTER BLVD., POLK CITY, FL 33868
POLK CITY CENTER

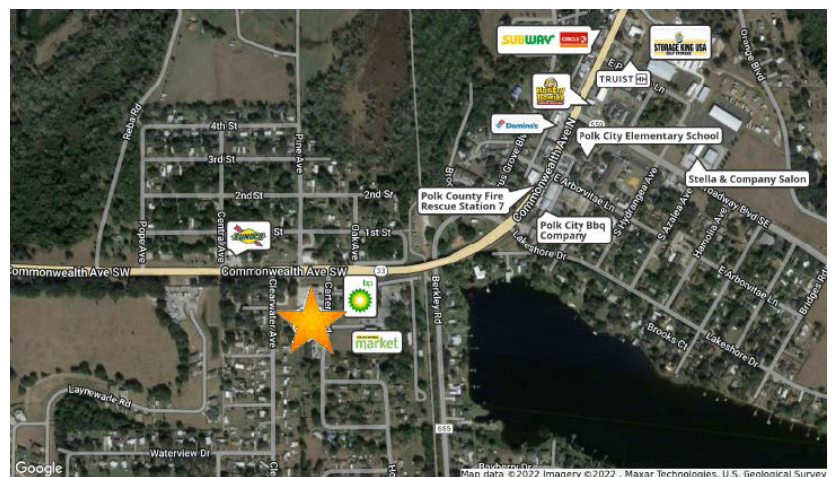
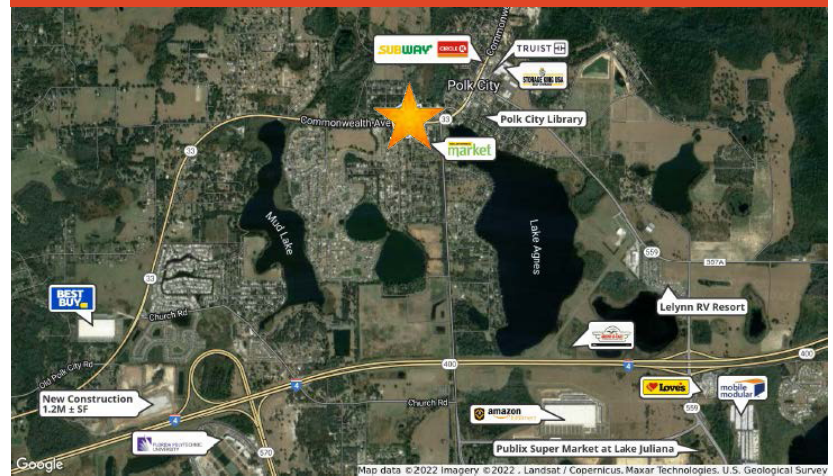
For More Information:

Solomon Attaway
 407-516-4562
 solomon@v3capital.com

Caden Florence
 407-307-4477
 caden@v3capital.com

Suite	Tenant	SF
1	Diamondback Hoist & Crane	1,019 SF
2	Devine Ophthalmic	1,019 SF
3	Devine Ophthalmic	1,019 SF
4	El Souki Nails Art Studio	1,019 SF
5	El Souki Nails Art Studio	1,019 SF
6	The Pretty Swan	1,019 SF
7	Kreative Dental Care	1,019 SF
8	Kreative Dental Care	1,019 SF
9-10	AVAILABLE	2,038 SF
	Total Square Feet	10,190 SF

RETAILER MAPS



www.v3commercialadvisors.com

The information contained herein has been given to us by the owner of the property or other sources we deem reliable. We have no reason to doubt its accuracy, but we do not guarantee it. All information should be verified prior to leasing.



496 S. Hunt Club Blvd.
 Apopka, FL 32703
 407-848-1663
V3Capital.com