

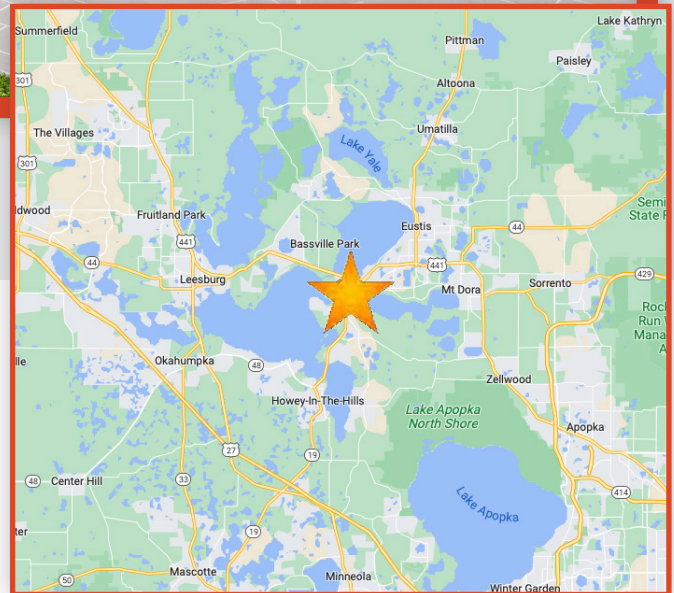


1990-2038 SR 19, TAVARES, FL 32778
**SECOND-GEN RESTAURANT SPACE IN
PUBLIX-ANCHORED CENTER**

PROPERTY HIGHLIGHTS

Available: Suite 108

- Located in Tavares Crossroads
- In-line retail spaces available in Publix-anchored shopping center
- Center was built recently
- Pylon signage available
- Highly visible from SR 19 with traffic counts of 40,000 AADT
- Located in a fast-growing commercial corridor with national brands entering the market, including Taco Bell, Popetes, McDonalds, and Clean Machine Car Wash



FOR MORE INFORMATION

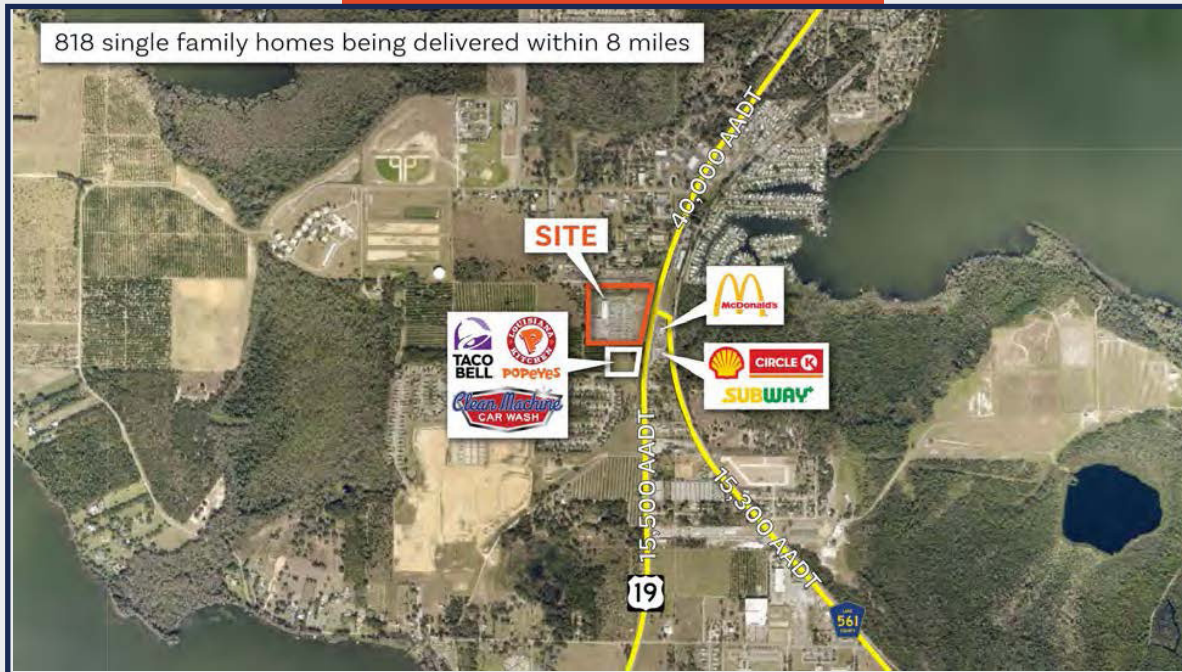
Solomon Attaway
407-516-4562
solomon@v3capital.com

Caden Florence
304-588-0370
caden@v3capital.com

1990-2038 SR 19, TAVARES, FL 32778

SECOND-GEN RESTAURANT SPACE IN PUBLIX-ANCHORED CENTER

RETAILER MAP



SITE AERIAL



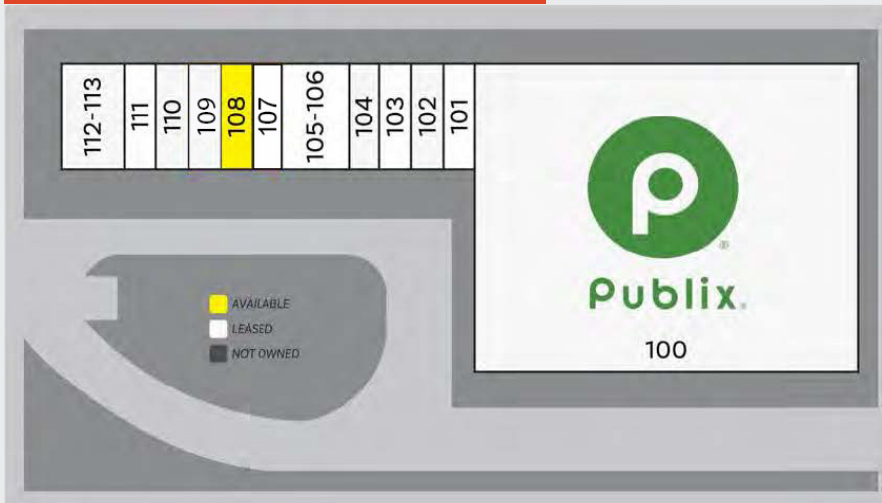
www.v3commercialadvisors.com

The information contained herein has been given to us by the owner of the property or other sources we deem reliable. We have no reason to doubt its accuracy, but we do not guarantee it. All information should be verified prior to leasing.

1990-2038 SR 19, TAVARES, FL 32778

SECOND-GEN RESTAURANT SPACE IN PUBLIX-ANCHORED CENTER

SITE PLAN & PHOTOS



SITE PLAN

Suite	Tenant	Size
100	Publix	45,600
101	Publix Liquors	1,300
102	Great Clips	1,300
103	Veterinary Clinic	1,300
104	ChemDry	1,300
105-106	Tavares Nails & Spa	2,600
107	ATT	1,300
108	AVAILABLE	1,300
109	Brazilian Wax	1,300
110	East Wok	1,300
111	Hungry Howie's	1,300
112-113	San Jose's	2,600

TOTAL 62,500



www.v3commercialadvisors.com

The information contained herein has been given to us by the owner of the property or other sources we deem reliable. We have no reason to doubt its accuracy, but we do not guarantee it. All information should be verified prior to leasing.