



**FOR LEASE**  
**CALL FOR PRICING**



**10920 MOSS PARK RD.  
ORLANDO, FL 32832**

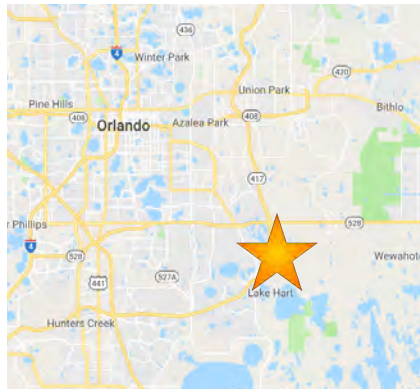
**MEDICAL VILLAGE  
AT NONA**

For More Information:

**Bobby Bridges**

407 616 1025

bobby@v3capgroup.com



**PROPERTY HIGHLIGHTS**

- Rare second generation, move in ready medical office
- 3,083 SF available with 6 exam rooms including one procedure room
- Prominent location with easy access and visibility from FL-417
- Pylon signage available
- Ample parking
- Recent construction with high-end finishes

**DEMOGRAPHICS**

	1 MILE	3 MILE	5 MILE
<b>Population</b>	7,483	35,550	60,334
<b>Households</b>	2,631	11,978	21,084
<b>Median HH Income</b>	\$95,627	\$99,763	\$95,967

[www.v3commercialadvisors.com](http://www.v3commercialadvisors.com)

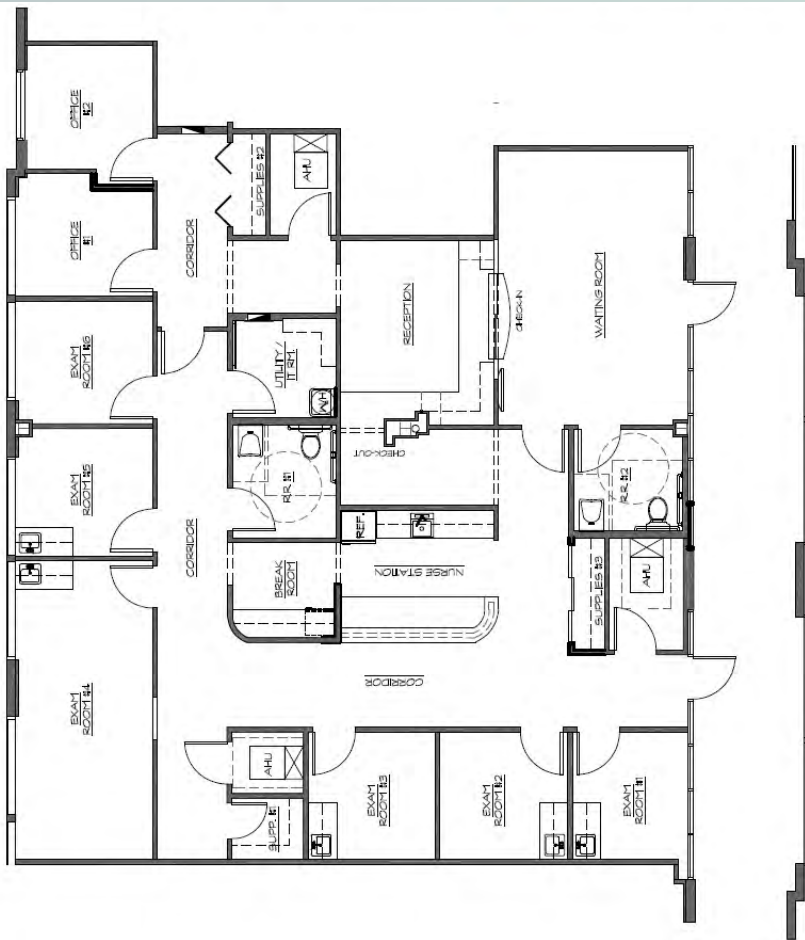
The information contained herein has been given to us by the owner of the property or other sources we deem reliable. We have no reason to doubt its accuracy, but we do not guarantee it. All information should be verified prior to purchase or lease.



# PROPERTY AERIAL



## SUITE 224



**SIZE:** 3,083 SF  
**AVAILABLE:** IMMEDIATELY

- Located on the second floor
- Six exam rooms
- One procedure room
- Two doctors offices
- Nurses station
- Spacious waiting room
- Two ADA bathrooms

[www.v3commercialadvisors.com](http://www.v3commercialadvisors.com)

The information contained herein has been given to us by the owner of the property or other sources we deem reliable. We have no reason to doubt its accuracy, but we do not guarantee it. All information should be verified prior to purchase or lease.

**Bobby Bridges**  
407 616 1025  
[bobby@v3capgroup.com](mailto:bobby@v3capgroup.com)