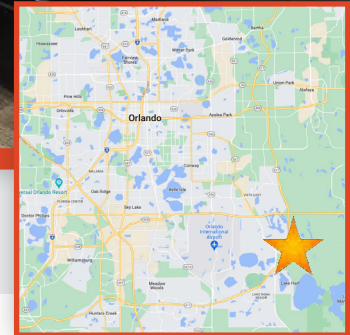




10962 MOSS PARK ROAD, ORLANDO, FL 32832  
**MEDICAL VILLAGE AT NONA**



## PROPERTY HIGHLIGHTS

- Brand new construction available for lease in a two-building medical office complex
- 1st floor - Landlord willing to deliver and pay for turnkey Medical Office Space
- Prominent location with easy access and visibility from FL-417
- Ample Parking
- Landlord willing to build to suit for qualified tenant

## DEMOGRAPHICS

	1 MILE	3 MILE	5 MILE
Population	7,419	31,202	54,439
Households	2,609	10,617	18,884
Med. HH Income	\$85,130	\$92,226	\$83,627

## FOR MORE INFORMATION

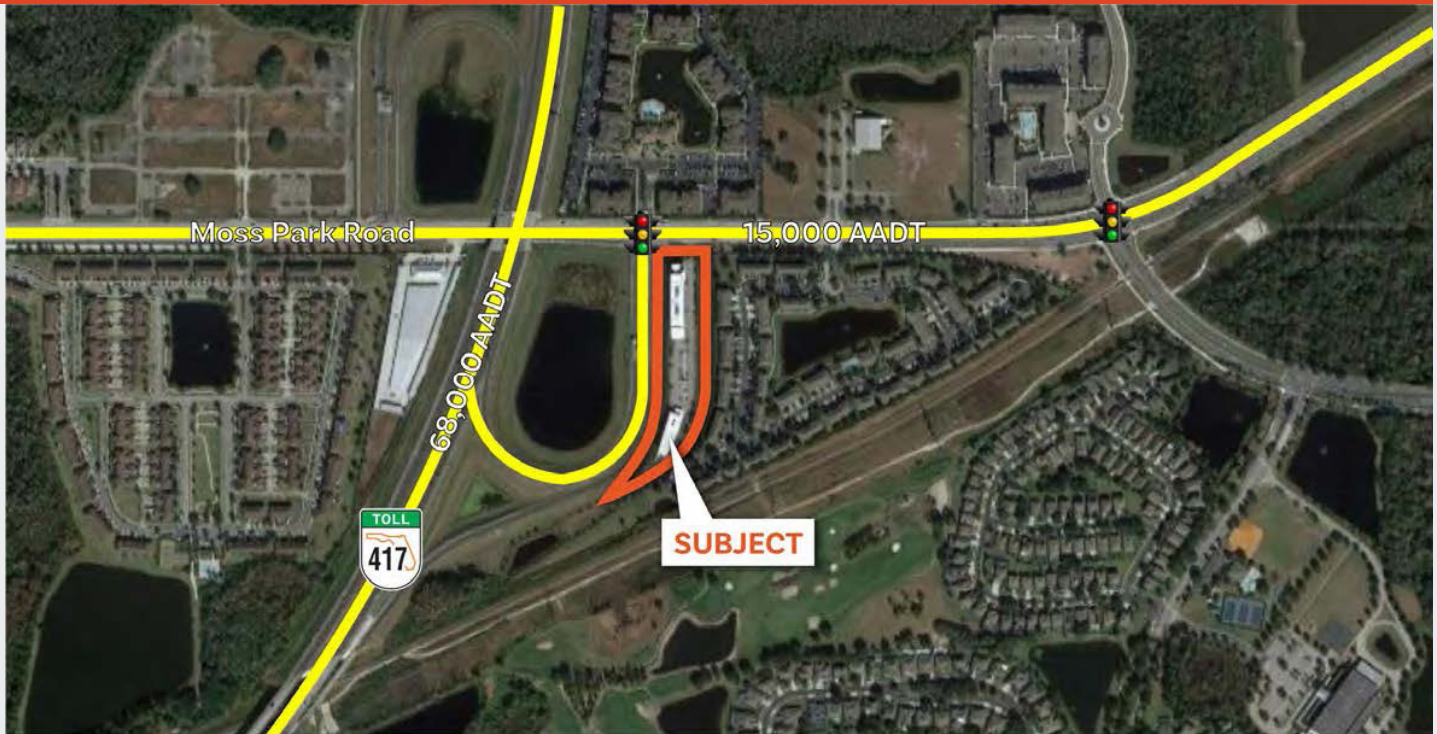


**Bobby Bridges**  
407-616-1025  
bobby@v3capital.com

10962 MOSS PARK ROAD, ORLANDO, FL 32832  
**MEDICAL VILLAGE AT NONA**

For More Information:  
**Bobby Bridges**  
407-616-1025  
bobby@v3capital.com

**SUBJECT AERIAL**



**FLOOR PLAN - 1ST FLOOR**

