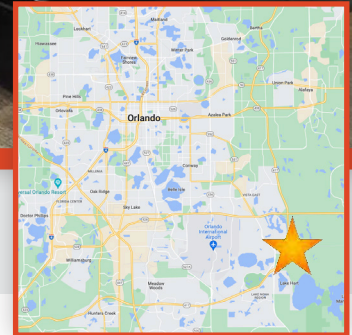




10962 MOSS PARK ROAD, ORLANDO, FL 32832
MEDICAL VILLAGE AT NONA



PROPERTY HIGHLIGHTS

- Brand new construction available for lease in a two-building medical office complex
- 1st floor - 2,000 SF Grey Shell Medical Office Space
- Prominent location with easy access and visibility from FL-417
- Ample Parking
- Landlord willing to build to suit for qualified tenant

DEMOGRAPHICS

	1 MILE	3 MILE	5 MILE
Population	7,419	31,202	54,439
Households	2,609	10,617	18,884
Med. HH Income	\$85,130	\$92,226	\$83,627

FOR MORE INFORMATION



Bobby Bridges
407-616-1025
bobby@v3capital.com



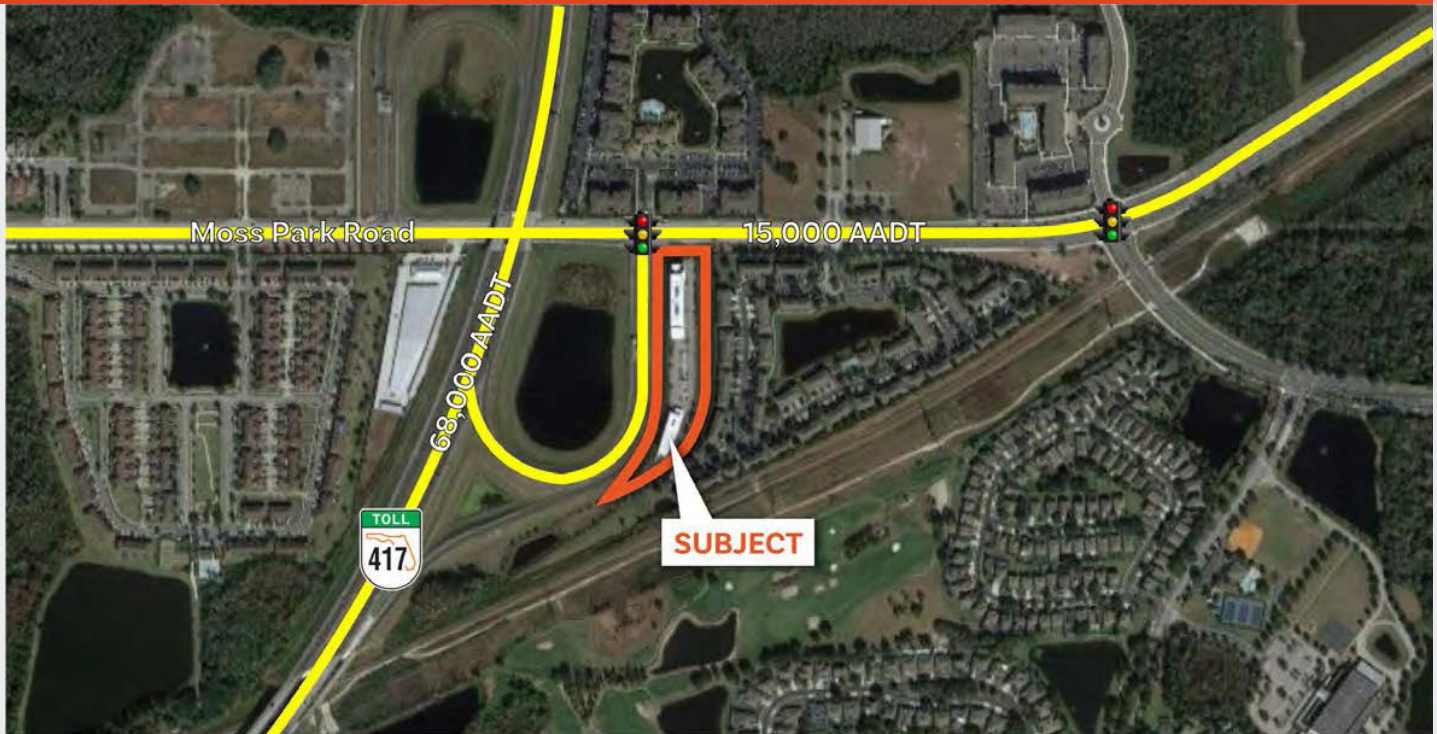
FOR LEASE
Call for Pricing

10962 MOSS PARK ROAD, ORLANDO, FL 32832
MEDICAL VILLAGE AT NONA

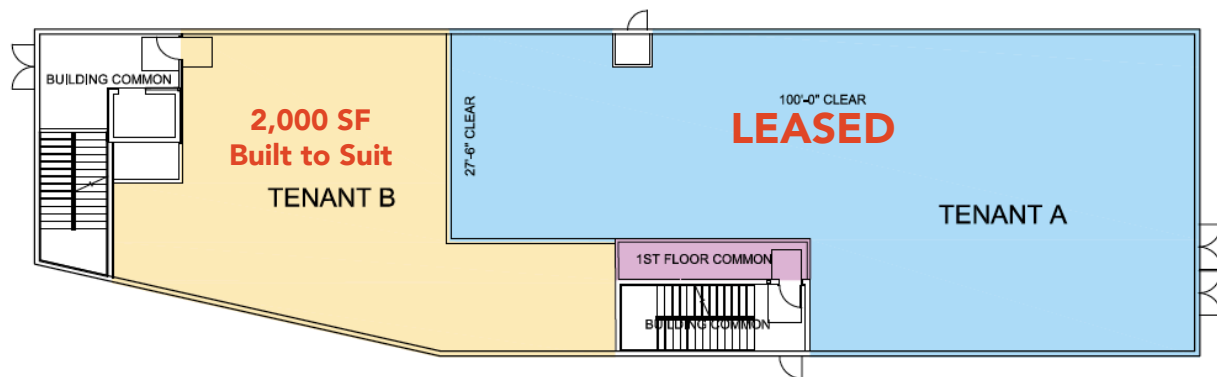
For More Information:

Bobby Bridges
407-616-1025
bobby@v3capital.com

SUBJECT AERIAL



FLOOR PLAN - 1ST FLOOR



www.v3commercialadvisors.com

The information contained herein has been given to us by the owner of the property or other sources we deem reliable. We have no reason to doubt its accuracy, but we do not guarantee it. All information should be verified prior to leasing.



496 S. Hunt Club Blvd.
Apopka, FL 32703
407-848-1663
V3Capital.com