



10920 MOSS PARK ROAD, ORLANDO, FL 32832
MEDICAL VILLAGE AT NONA

PROPERTY HIGHLIGHTS

Suite 124: 1,500 SF
Suite 224: 3,083 SF

- Rare second generation, move-in ready medical office
- Two leasing options available
- Prominent location with easy access and visibility from FL-417
- Pylon signage available
- Ample Parking
- Recent construction with high-end finishes

DEMOGRAPHICS

	1 MILE	3 MILE	5 MILE
Population	7,483	35,550	60,334
Households	2,631	11,978	21,084
Med HH Income	\$95,627	\$99,763	\$95,967

FOR MORE INFORMATION



Bobby Bridges
407-616-1025
bobby@v3capital.com



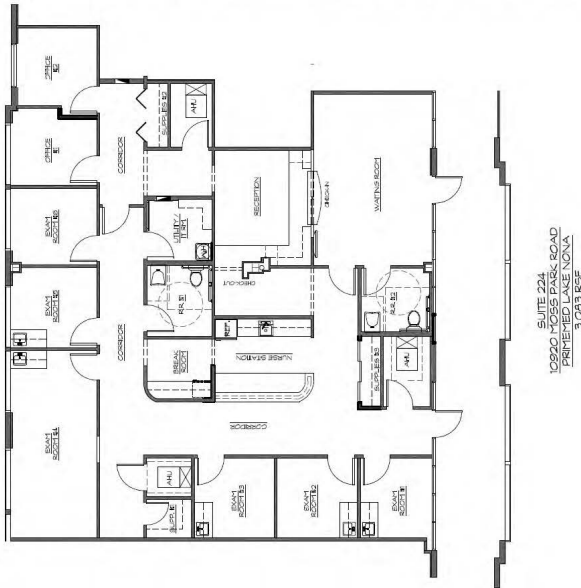
FOR SALE OR LEASE

Call for Pricing

10920 MOSS PARK ROAD, ORLANDO, FL 32832
MEDICAL VILLAGE AT NONA

For More Information:
Bobby Bridges
407-616-1025
bobby@v3capital.com

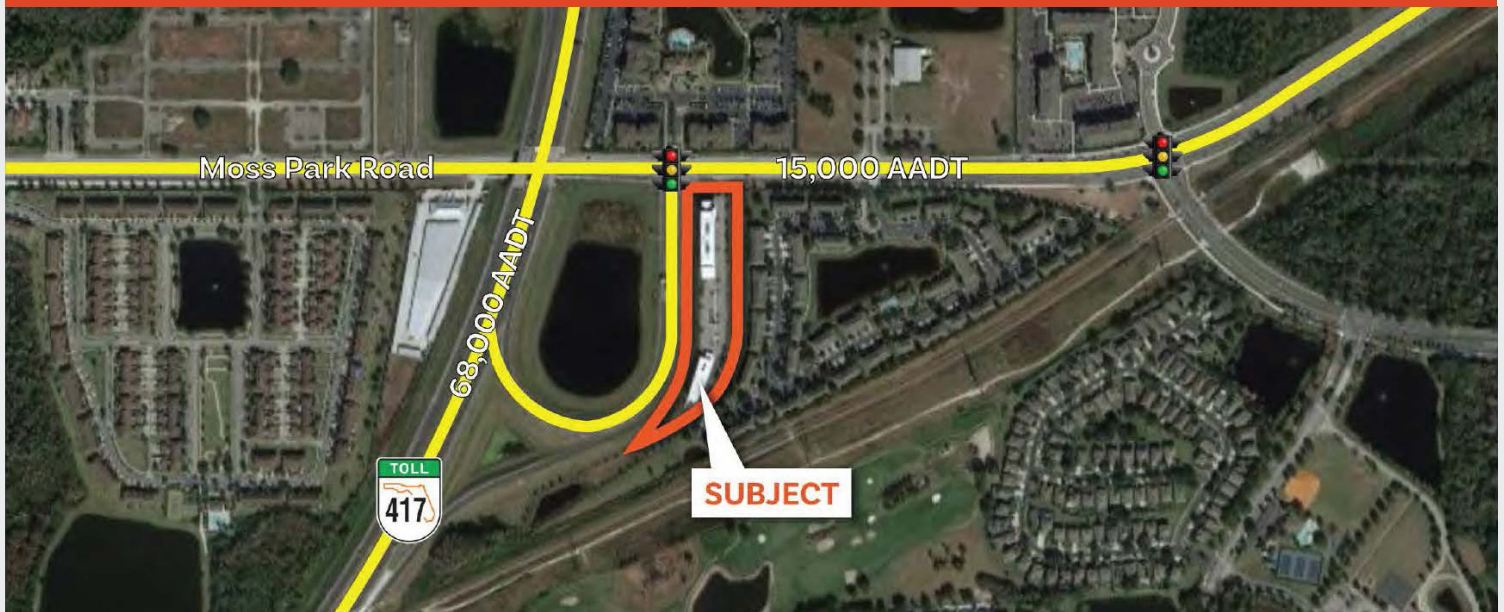
SUITE 224



SIZE: 3,083 SF
AVAILABLE: Immediately

- Located on the second floor
- Six exam rooms
- One procedure room
- Two doctor's offices
- Nurse's station
- Spacious waiting room
- Two ADA bathrooms

PROPERTY AERIAL



www.v3commercialadvisors.com

The information contained herein has been given to us by the owner of the property or other sources we deem reliable. We have no reason to doubt its accuracy, but we do not guarantee it. All information should be verified prior to leasing.



496 S. Hunt Club Blvd.
Apopka, FL 32703
407-848-1663
V3Capital.com



FOR SALE OR LEASE

Call for Pricing

10920 MOSS PARK ROAD, ORLANDO, FL 32832
MEDICAL VILLAGE AT NONA

SUITE 224



For More Information:
Bobby Bridges
407-616-1025
bobby@v3capital.com

www.v3commercialadvisors.com

The information contained herein has been given to us by the owner of the property or other sources we deem reliable. We have no reason to doubt its accuracy, but we do not guarantee it. All information should be verified prior to leasing.

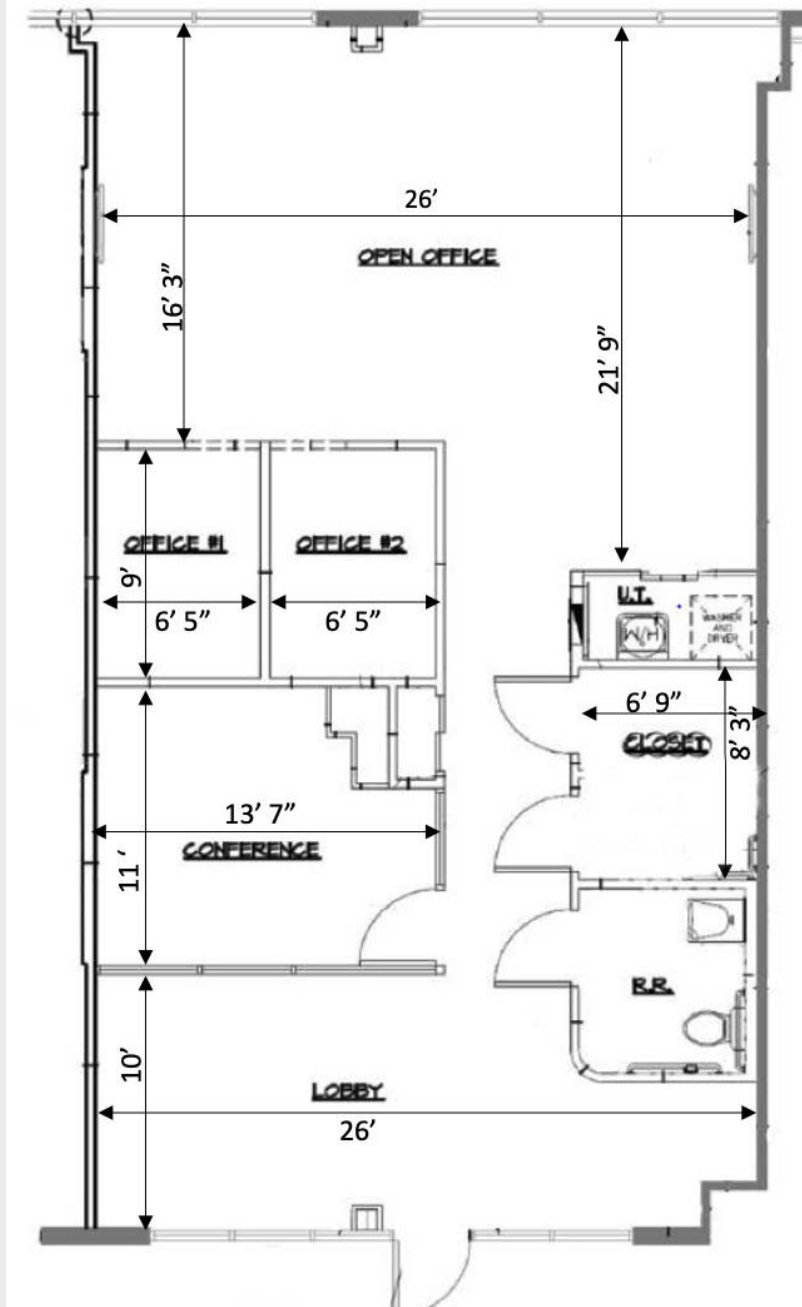


496 S. Hunt Club Blvd.
Apopka, FL 32703
407-848-1663
V3Capital.com

10920 MOSS PARK ROAD, ORLANDO, FL 32832
MEDICAL VILLAGE AT NONA

For More Information:
Bobby Bridges
407-616-1025
bobby@v3capital.com

SUITE 124



SIZE: 1,500 SF
AVAILABLE: Immediately

- Located on first floor
- Two small exam rooms
- One large doctor's office/ conference room
- Large open space - perfect for therapy or additional exam rooms
- Spacious waiting rooms
- Landlord offering TI Package for qualified tenants
- One ADA bathroom