

4025-4045 DOW ROAD, MELBOURNE, FL 32934
DOW ROAD/ELLIS ROAD
INDUSTRIAL FLEX BUILDINGS

PROPERTY HIGHLIGHTS

- One 3,750 SF unit available for lease
- Located in close proximity to the Space Coast and growing related industries
- New Ellis Rd. connection to I-95 is less than 1.5 miles from property
- Excellent logistical location with easy access to I-95, SR 528, and Port Canaveral
- Most units are fully air conditioned

DRIVE TIMES

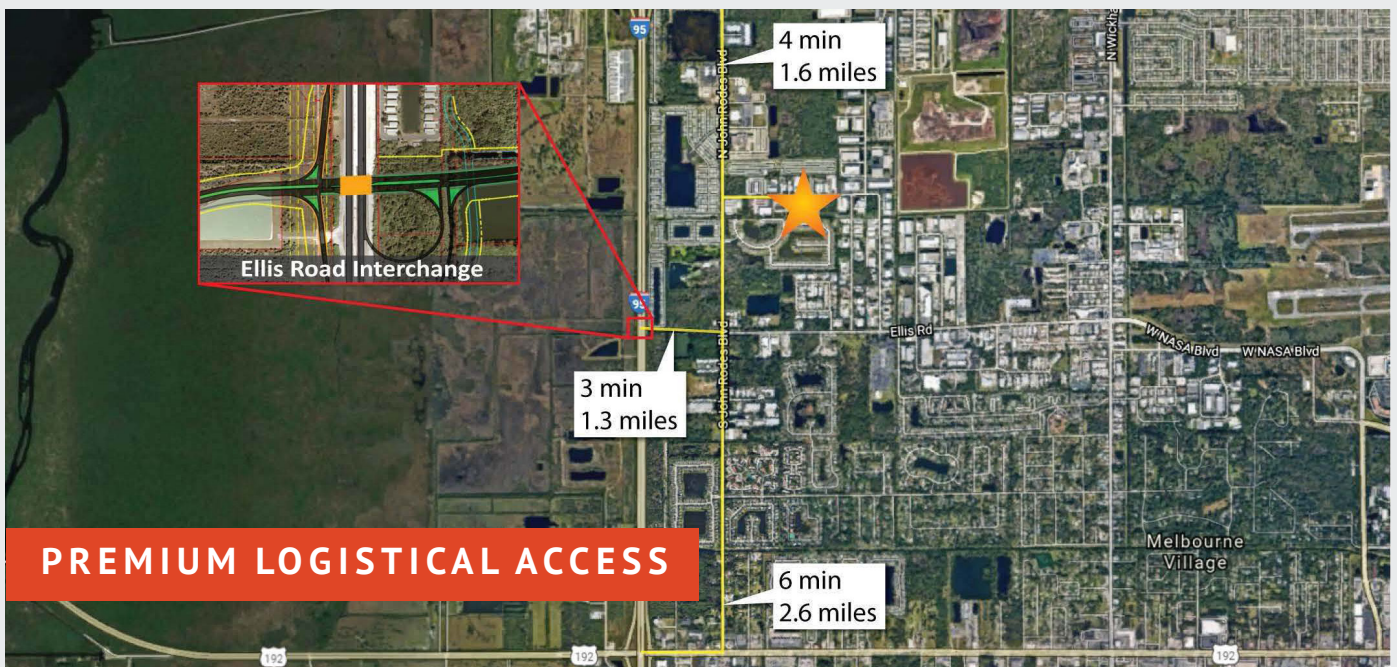
Orlando	1 Hour
Port Canaveral	36 Minutes
Kennedy Space Center	40 Minutes

For More Information:

Joe Poirier
321-537-7996
Joe@v3capital.com

4025-4045 DOW ROAD, MELBOURNE, FL 32934

DOW ROAD/ELLIS ROAD - INDUSTRIAL FLEX BUILDINGS



For More Information:

Joe Poirier
321-537-7996
Joe@v3capital.com