



FOR SALE
Price: \$3,800,000



**530-630 E CROWN POINT RD
 WINTER GARDEN, FL 34787**

GREAT DEVELOPMENT OPPORTUNITY

For More Information:

Bobby Bridges
 407 616 1025
 bobby@v3capgroup.com



- PROPERTY HIGHLIGHTS**
- 16± acres of level, high and dry land with utilities in place
 - 1,300ft± frontage on E Crown Point Rd
 - Zoned C-2, City of Winter Garden
 - Multiple ingress and egress points
 - Immediate access to SR 429, 2 miles from Turnpike, and 3.5 miles to SR 408
 - Six (6) lots - may be sold separately or divided

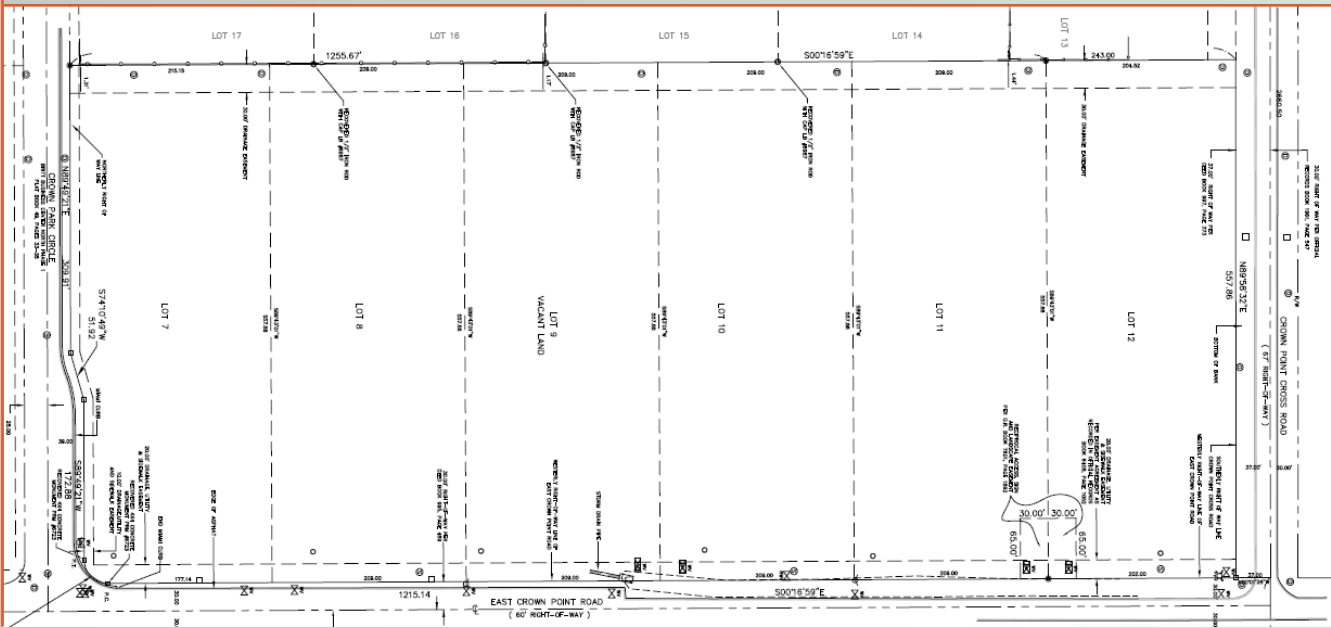
DEMOGRAPHICS

	1 MILE	3 MILE	5 MILE
Population	8,705	63,256	142,784
Households	2,736	21,698	49,004
Avg HH Income	\$74,730	\$80,335	\$80,942

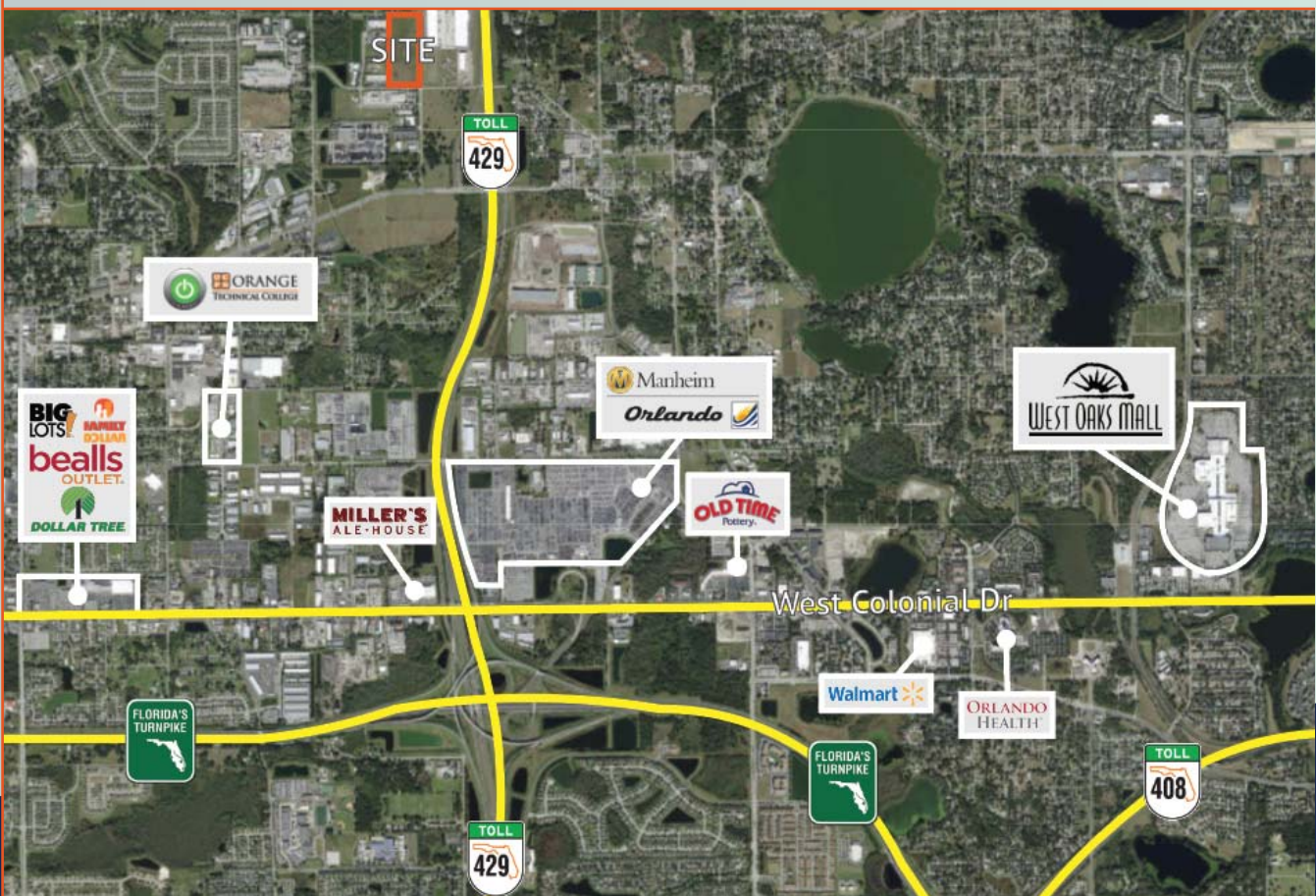
www.v3commercialadvisors.com

The information contained herein has been given to us by the owner of the property or other sources we deem reliable. We have no reason to doubt its accuracy, but we do not guarantee it. All information should be verified prior to purchase or lease.

SITE PLAN



LOCATION OVERVIEW



www.v3commercialadvisors.com

The information contained herein has been given to us by the owner of the property or other sources we deem reliable. We have no reason to doubt its accuracy, but we do not guarantee it. All information should be verified prior to purchase or lease.

Bobby Bridges
407 616 1025
bobby@v3capgroup.com