



**FOR LEASE**  
**LEASE RATE: \$12-15/SF**



**1011 MAITLAND CENTER COMMONS  
MAITLAND, FL 32751**

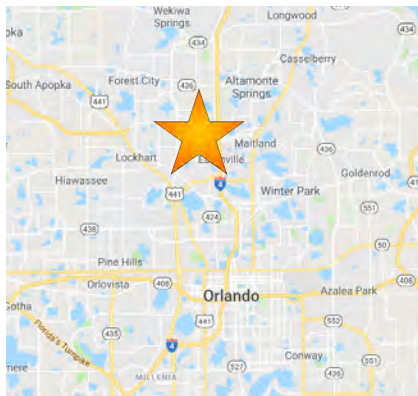
**TWO STORY OFFICE SPACE  
IN EXCELLENT LOCATION**

For More Information:

**Bobby Bridges**

407 616 1025

bobby@v3capgroup.com



**PROPERTY HIGHLIGHTS**

- +/-3,300 SF move-in ready office suite
- Efficient layout with mezzanine
- Below market rate
- Easy access to I-4 and Maitland Blvd
- Within walking distance to Sam Sneads, RDV, and other restaurants
- Ask about leasing incentives

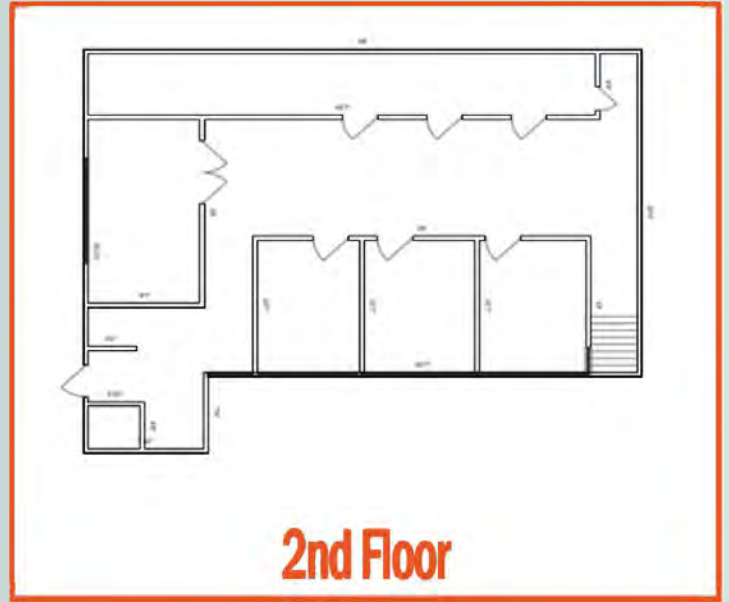
**DEMOGRAPHICS**

	1 MILE	3 MILE	5 MILE
<b>Population</b>	10,552	108,302	253,601
<b>Households</b>	4,678	45,459	104,749
<b>Median HH income</b>	\$58,107	\$52,596	\$54,462

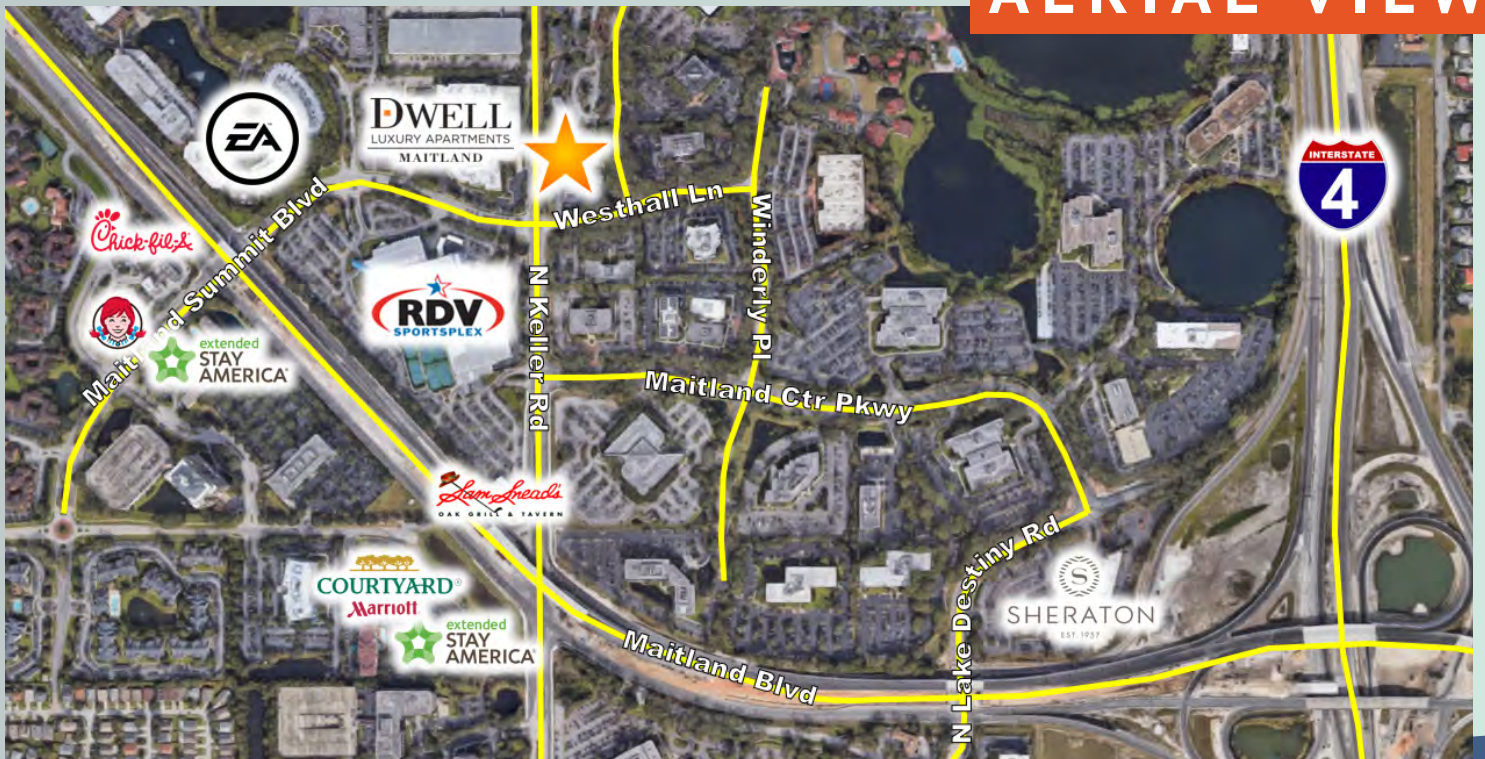
[www.v3commercialadvisors.com](http://www.v3commercialadvisors.com)

The information contained herein has been given to us by the owner of the property or other sources we deem reliable. We have no reason to doubt its accuracy, but we do not guarantee it. All information should be verified prior to purchase or lease.

# FLOOR PLAN



# AERIAL VIEW



[www.v3commercialadvisors.com](http://www.v3commercialadvisors.com)

The information contained herein has been given to us by the owner of the property or other sources we deem reliable. We have no reason to doubt its accuracy, but we do not guarantee it. All information should be verified prior to purchase or lease.

**Bobby Bridges**  
407 616 1025  
[bobby@v3capgroup.com](mailto:bobby@v3capgroup.com)